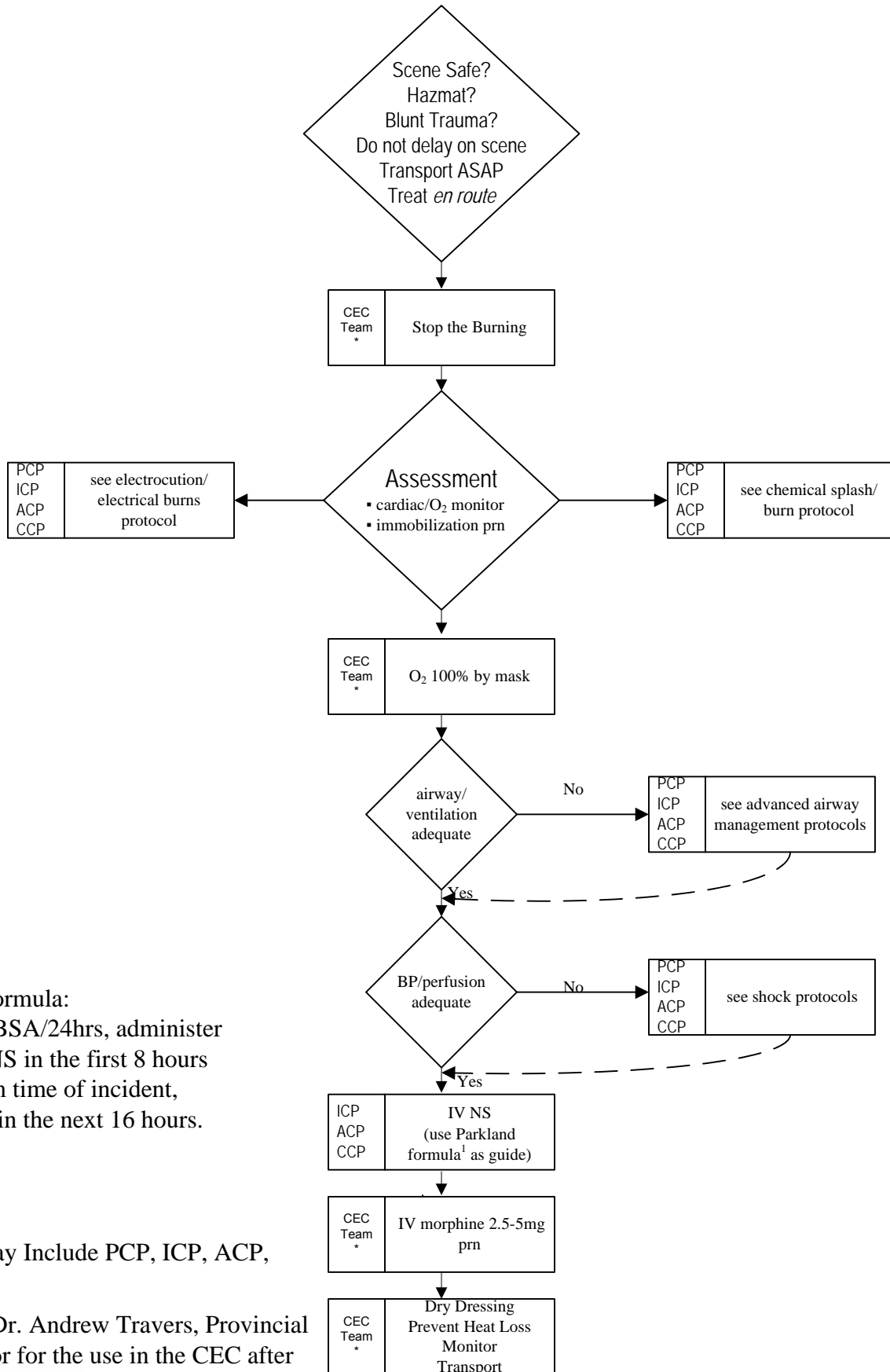


Protocol: Burns (fire/flame)-CEC	PDN: 6215.02-CEC	Last Updated: November 3, 2006	Subject: Burns	Page 1
---	-------------------------	---------------------------------------	-----------------------	--------



1. Parkland Formula:
2-4cc/kg/%BSA/24hrs, administer
half of the NS in the first 8 hours
starting from time of incident,
second half in the next 16 hours.

*CEC Team May Include PCP, ICP, ACP,
CCP, RN

Approved by: Dr. Andrew Travers, Provincial
Medical Director for the use in the CEC after
hours *Andrew H. Travers*